

**DIRECTIONS TO:**  
TACTRAN  
Bordeaux House  
31 Kinnoull Street  
Perth PH1 5EN  
Tel: 01738 475775



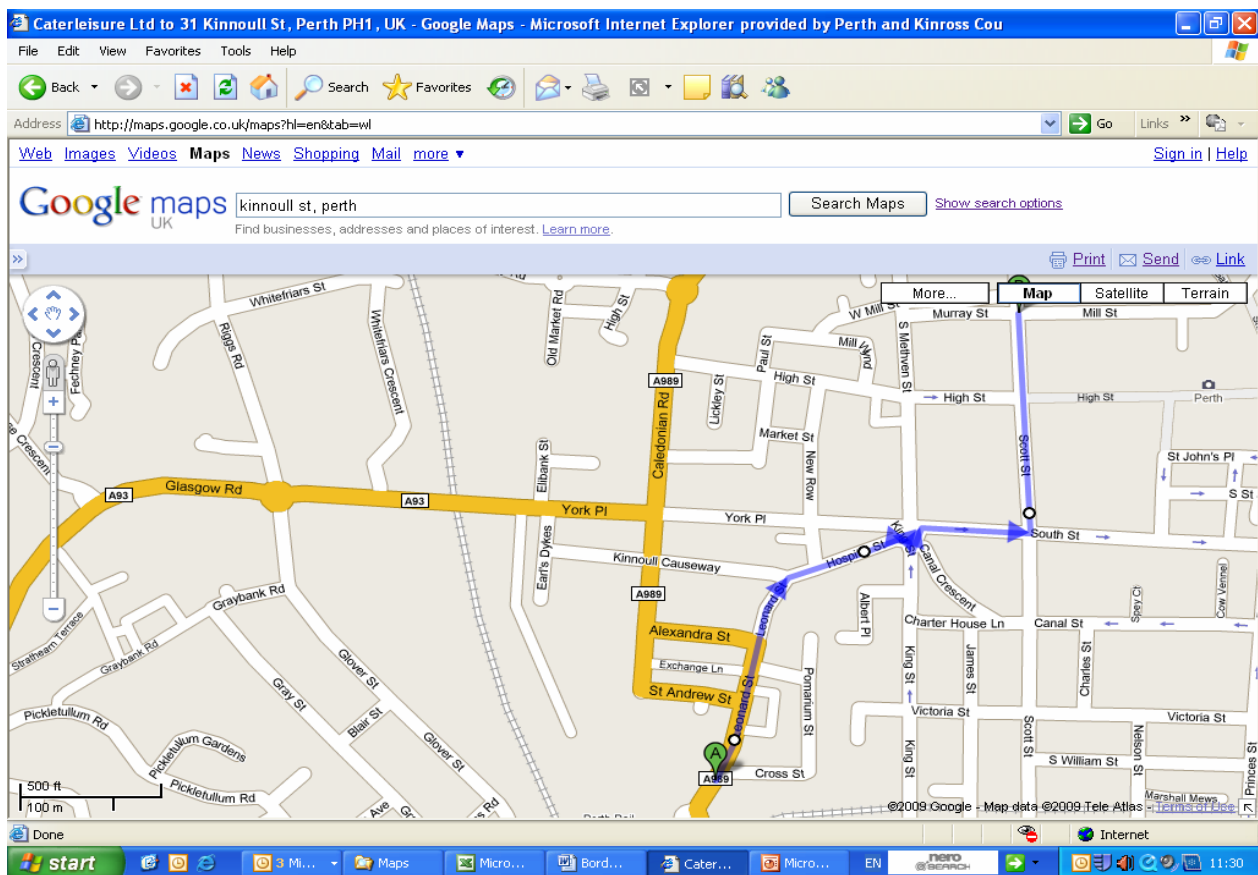
### **BY TRAIN/BUS:**

#### **From Perth Railway Station**

Exit the station and turn right onto Leonard Street. Follow Leonard Street, then bear right into Hospital Street. At the junction of Hospital St and South Street, turn right down South Street. At the next junction turn left along Scott Street. Scott St becomes Kinnoull Street and the Bordeaux House entrance is located between Craighdon Mountain Sports and The Bothy.

#### **From Perth Bus Station**

Exit the station and turn left onto Leonard Street. Follow Leonard Street, then bear right into Hospital Street. At the junction of Hospital St and South Street, turn right down South Street. At the next junction turn left along Scott Street. Scott St becomes Kinnoull Street and the Bordeaux House entrance is located between Craighdon Mountain Sports and The Bothy.



#### **From Broxden Park & Ride**

Turn right as you get off the Park and Ride bus at Mill Street, at the junction, cross the road and Bordeaux House entrance is just after The Bothy Bar & Restaurant.

### **BY BIKE**

Bike parking is available in the Kinnoull Street multi storey car park.

### **BY CAR:**

If you must travel by car, please try and share with others/colleagues to make your trip more sustainable.



### **FROM EDINBURGH**

Come straight into Perth through large park (South Inch). At traffic lights turn left then second right into Scott Street. Go through 3 sets of lights and Bordeaux House is on the right.

### **FROM DUNDEE**

Enter town centre via the second bridge (i.e. the Old Perth Bridge). At lights at end of the bridge bear right and go straight on to the first set of lights and turn left. This is Kinnoull Street and Bordeaux House is on the left just after the first set of lights.

### **FROM GLASGOW**

Come straight into town over Railway Bridge, past Library on the right and at next set of lights carry straight on. At second set of lights turn left then carry on through a set of lights then Bordeaux House is on the right.

### **FROM INVERNESS or CRIEFF**

Come straight into town and at roundabout by Police Station and the BP Garage turn left. At the second set of lights turn right, this is Kinnoull Street and Bordeaux House and is on the left just after the first set of lights.

### **FROM SCONE**

Enter town centre via the first bridge (i.e. the Old Perth Bridge). At lights at end of bridge bear right go straight on to the first lights and turn left. This is Kinnoull Street and Bordeaux House is on the left just after the first set of lights.

### **CAR PARKING**

A multi storey car park less than 5 minutes away on Kinnoull Street.