

# TACTRAN

## Board Meeting: Appraisal of the RTS

John Baggaley | 27 March 2007



# What is appraisal?

Appraisal is a process....

Comparing costs and benefits of a scheme or strategy

....over a period (60 years)

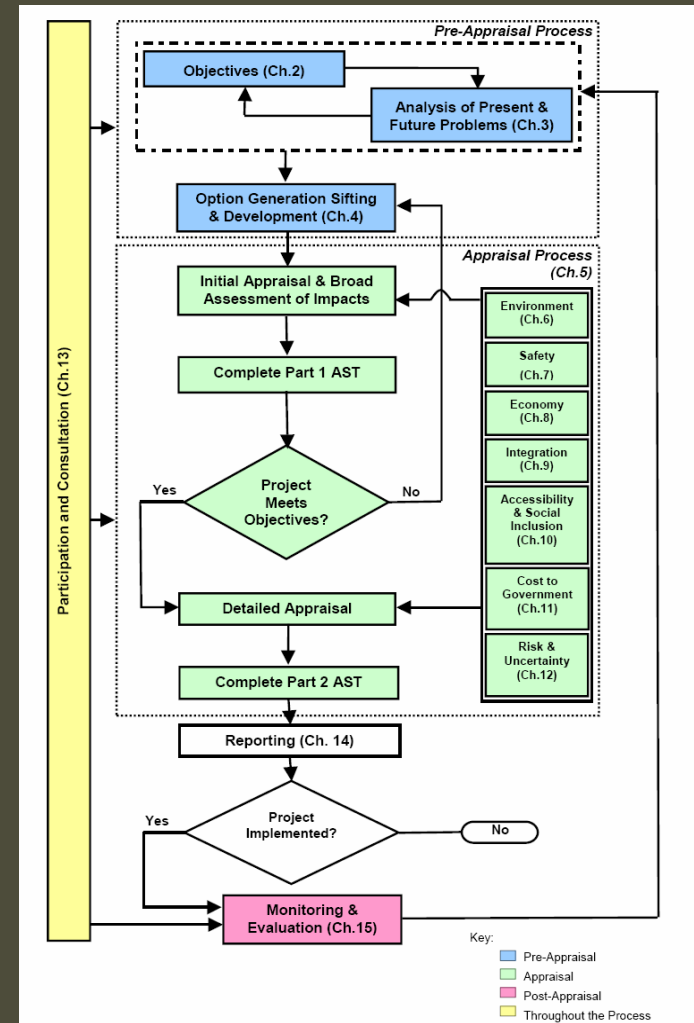
....for a fixed scenario

....and for variations

....using money values where possible

BUT also

.....looking at other indicators



# How have we done the appraisal?

## The early stages:

Identified Issues  
Agreed Objectives  
Reviewed a Long List of Options

## The Later Stages:

Developed a strategy  
Identified the key interventions  
Reviewed the strategy against the objectives  
Estimated the main benefits  
Outlined the costs



# The Content of the Appraisal

- Defined schemes tested using TMfS:
  - Operational appraisal
  - Economic appraisal
  - Vehicle emissions (inc CO<sub>2</sub>)
  - Road Accidents
- The whole strategy subject to an SEA
- Other strands against Objectives
- Summarised in an Appraisal Summary Table (AST)
  - Changes in mode share (overall and in key corridors)
  - Number of cars using new P&R sites
  - Number of vehicles using new roads
  - Change in total vehicle kms
  - Change in time (or %time) lost due to congestion
  - Carbon Monoxide (CO)
  - Oxides of Nitrogen (NO<sub>x</sub>)
  - Particulates (PM<sub>10</sub>s)
  - Hydrocarbon pollutants (benzene & others)
  - CO<sub>2</sub>

# Economics - What has been appraised?

## Road schemes

A90 Corridor Improvements round/through Dundee

A9/A94 link north of Perth

A9/A84 link and M9/A811 junction Stirling

## Public Transport Schemes

Increased bus frequencies on key corridors

Park & Ride – by bus and train

Improved interchange

Enhanced rail services:

- Perth - Edinburgh
- Dundee – Edinburgh
- Tay Estuary Rail Service

# Economics - What has **not** been appraised?

## Policy measures:

- Land use
- Parking

## Regional Strategies

- Walking and Cycling Strategy
- Transport Information Strategy
- Regional Road Safety Plan
- Freight Quality Partnership

## Generic Enhancements

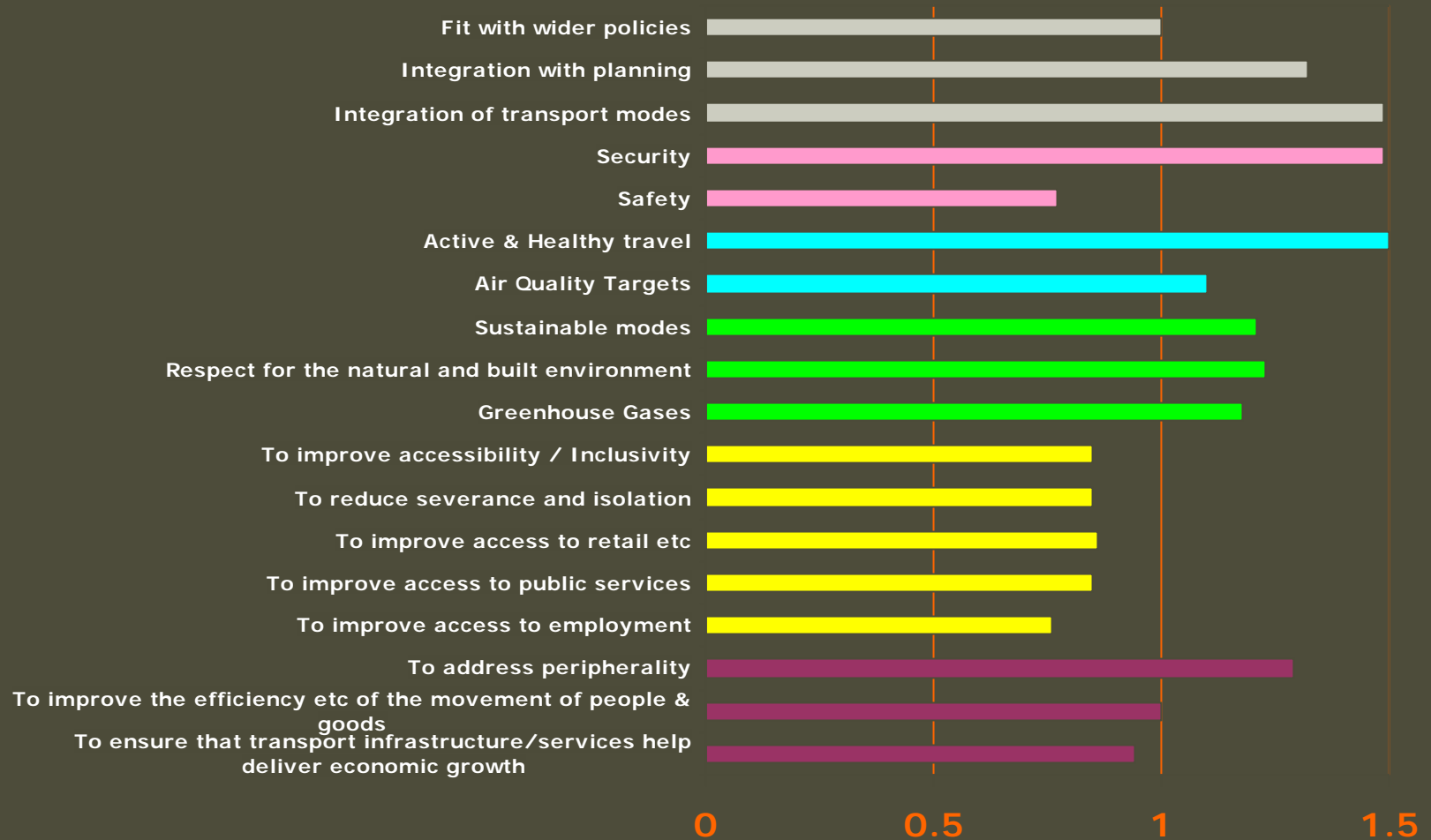
- Access to healthcare
- National Park and tourist access
- Promotion of sustainable transport
- Car sharing
- Safe Routes to Schools
- Integrated Ticketing Schemes
- Community Transport and DRT

## Others

- Rail freight/access to ports
- Dundee Airport

# Questions

# How well do we meet the objectives?



# Is it achieving anything?

## Peak-hour traffic on the new roads

- A90 Corridor Improvements round/through Dundee
- A9/A94 Link Road (Perth)
- A84 to A9 Link Road
- 0.5% increase in vehicle kms

All above levels needed to justify a new road

## Public Transport

- 1.9 million extra public transport journeys (pa)
  - +1.3m urban bus
  - +0.9m rail
  - -0.3m inter-urban bus

# Does anyone use Park and Ride?

2,000 additional P&R cars per day (Average 220 cars/site)

## ■ Top 6 are :

- Bannockburn/Pirnhall (Stirling)
- Scoonieburn (M90 Perth S)
- Logie (A91 Stirling NE)
- Baldovie (A92 east of Dundee)
- Newport-on-Tay (S end of Tay Bridge)
- Inveralmond (A9 Perth N)

## ■ Under-performers **at present**

- Perth East (A90)
- Kinross (M90)
- Blackford/Greenloaning (A9 corridor)

# Will it work?

## Technical:

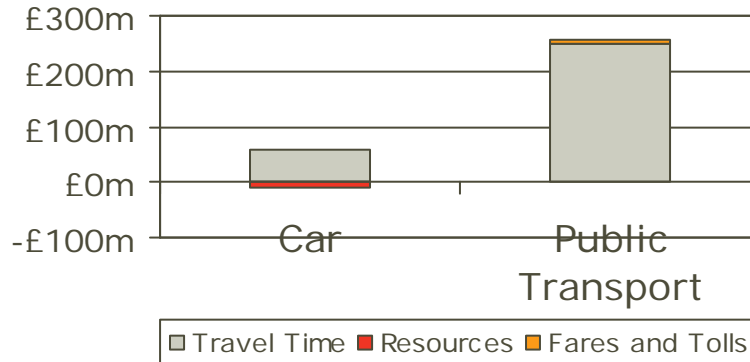
- Land availability – may be a delay
- Engineering design – environment may add cost
- Rail capacity constraints – RUS helps significantly

## Operational:

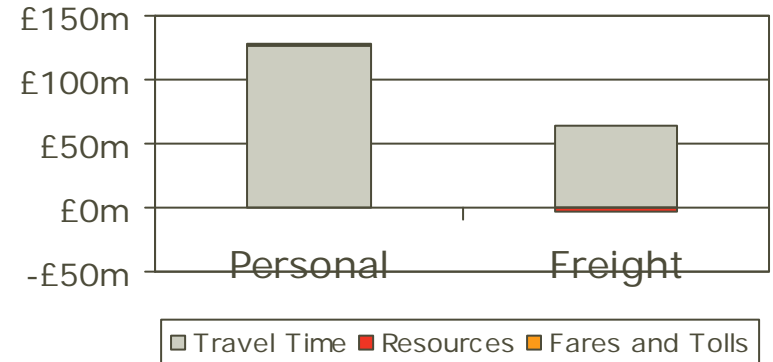
- Bus priority on congested roads
- Walking and cycling measures
- Interfaces with existing roads

# What are the headline benefits of the RTS?

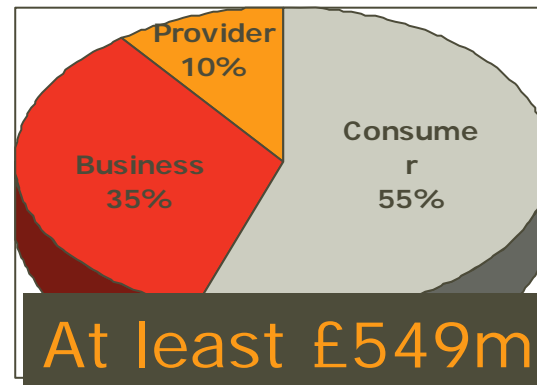
### Consumer benefits



### Business benefits



### Who benefits?



# Questions

# Document control Sheet

Project title:	TACTRAN RTS
MVA project number:	C34
Document type:	Presentation
Directory & file name:	

## Document Approval

Primary author:	John Baggaley
Other author(s):	
Reviewer(s):	David Connolly
Formatted by:	

## Distribution

Issue	Date	Distribution	Comments
1	27/03/07	Shown to TACTRAN Board	